

Office for Lease

1912 N Division, Spokane WA

Available February 2018



Centrally Located Office

- Located between 2 major arterials
- 26,000 Cars per day on Division
- 13,200 Cars per day on Indiana
- Very clean, secure & well-lit building
- Security Cameras
- Plenty of parking available
- ADA Accessible—Main Floor Suite
- Building Tenants Include:
 - ⇒ Teamsters Local 690
 - ⇒ Byrd Real Estate Group
 - ⇒ Harney-McCrink & Harkness, LMT
 - ⇒ Professional Musicians Union
 - ⇒ Western Hearing Aid
 - ⇒ Associated Dentists

Property Specifications:

Site:	30,000 +/- sf
Total Building:	14,760 +/- sf
Suite 100:	1,850 +/- sf
Parcel #:	35083.2809
Zoning:	GC-70 (General Commercial)

Lease Rate:

\$14 psf

Full Service

For more information:

Doug Byrd

509-326-8080

Cell 509-216-6575

doug@byrdrealestategroup.com

Or

Sharon Reynolds

509-326-8080

sharon@byrdrealestategroup.com



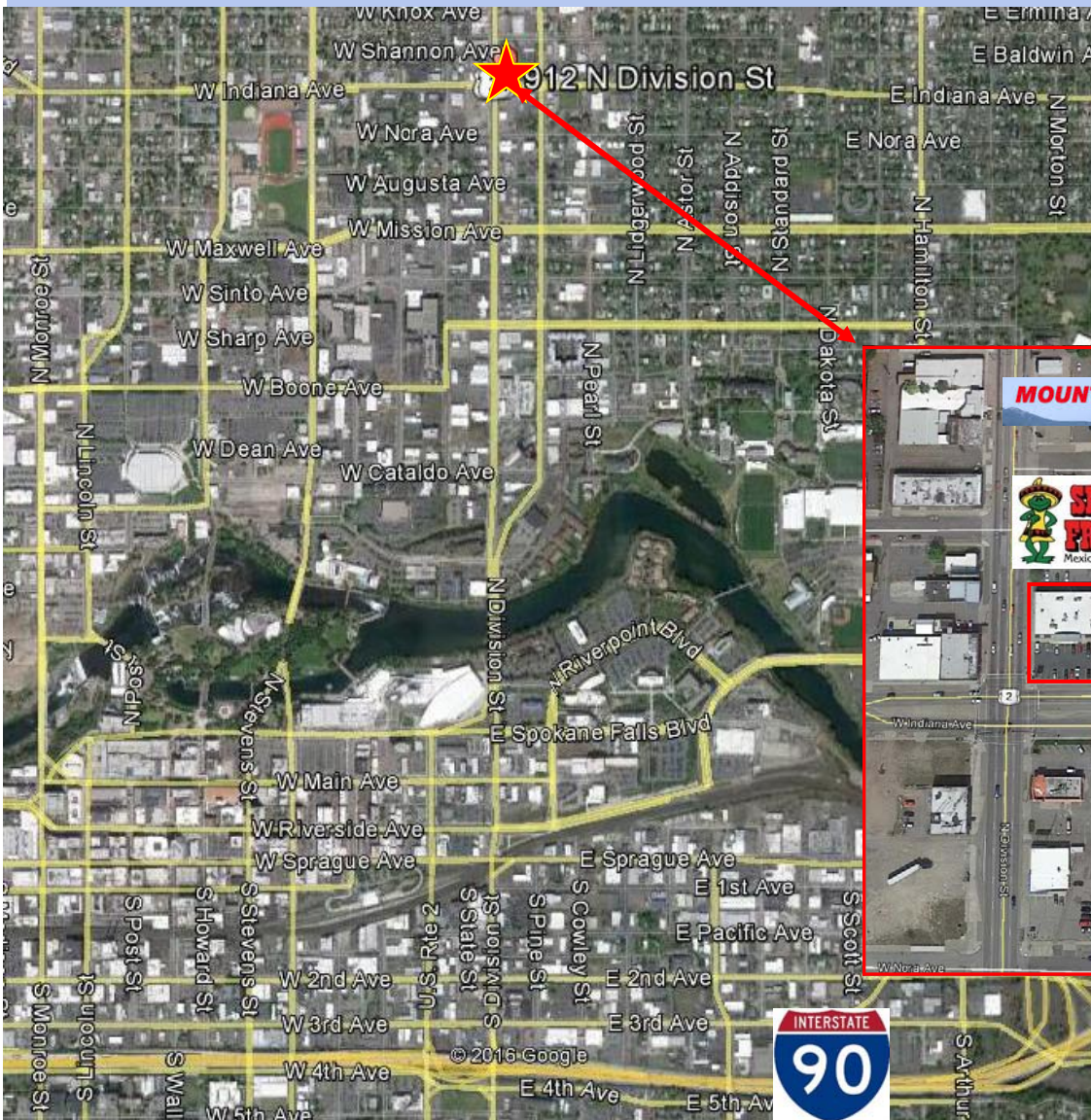
Byrd Real Estate Group L.L.C.
PRODUCING PROPERTY SOLUTIONS
1912 N. Division St., Suite 201
Spokane WA 99207

CBA COMMERCIAL BROKERS
ASSOCIATION



Office for Lease

1912 N Division, Spokane WA



For more information:

Doug Byrd

509-326-8080

Cell 509-216-6575

doug@byrdrealestategroup.com

Or

Sharon Reynolds

509-326-8080

sharon@byrdrealestategroup.com



Byrd Real Estate Group L.L.C.

PRODUCING PROPERTY SOLUTIONS

1912 N. Division St., Suite 201

Spokane WA 99207



LoopNet

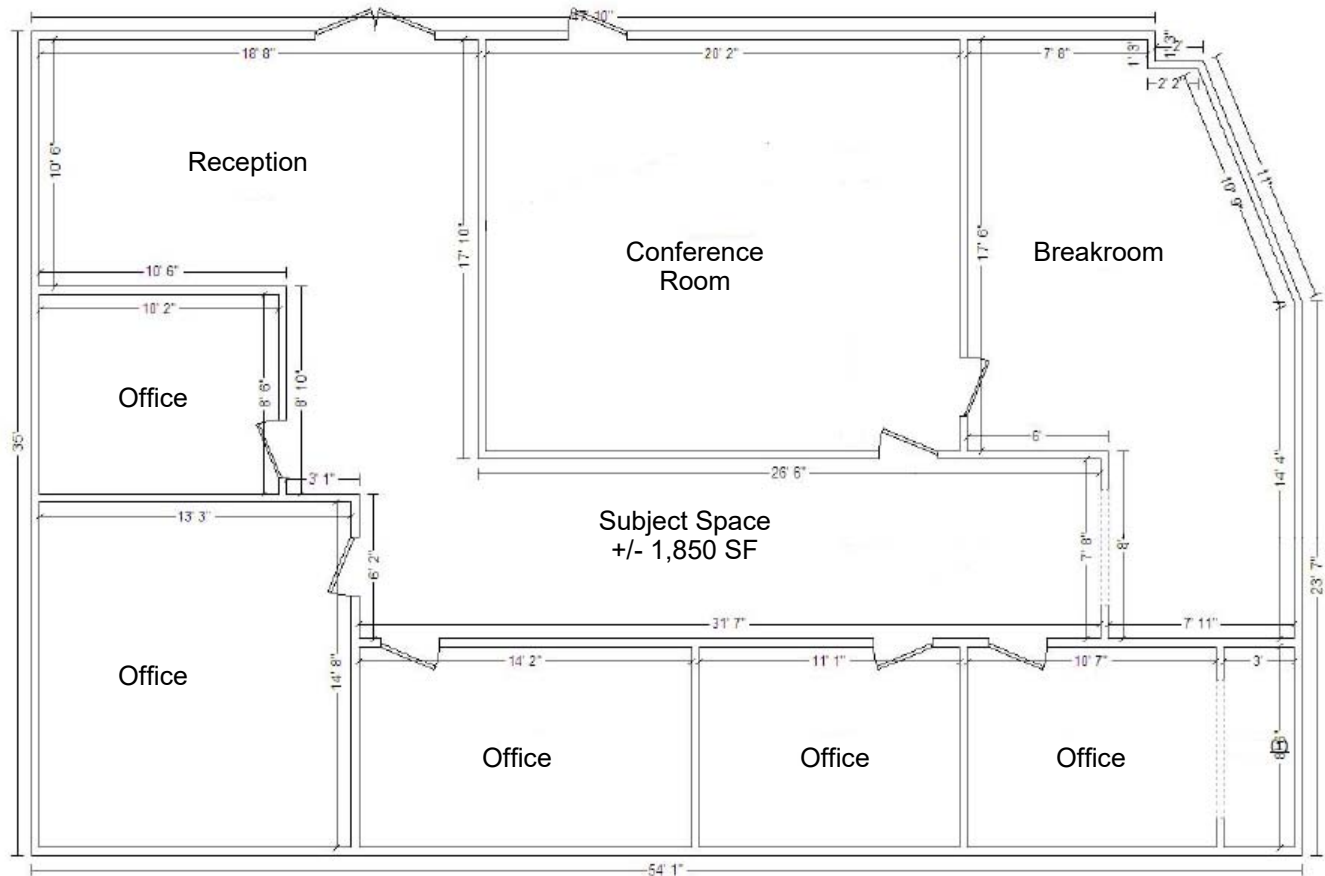


CBA

COMMERCIAL BROKERS ASSOCIATION

Office for Lease

1912 N Division, Spokane WA



For more information:

Doug Byrd

509-326-8080

Cell 509-216-6575

doug@byrdrealestategroup.com

Or

Sharon Reynolds

509-326-8080

sharon@byrdrealestategroup.com



Byrd Real Estate Group L.L.C.
PRODUCING PROPERTY SOLUTIONS

1912 N. Division St., Suite 201
Spokane WA 99207



CBA COMMERCIAL BROKERS
ASSOCIATION