

Retail or Office

6501 & 6507 Highway 2

Priest River, ID

FOR SALE OR LEASE



Great Location!

- ⇒ Located on busy Northerly corridor
- ⇒ Situated between Spokane WA & Sandpoint ID
- ⇒ Great visibility
- ⇒ Constructed in 2006

Sale Price \$450,000

Lease Rate \$8.00 psf

Site Information:

Bldg size:	+/- 6,768 sf
Available Suites:	+/- 1,100 sf
	+/- 1,800 sf
Site size:	+/-24,394 sf
Parcel #:	RPR2820000010A
Zoning:	S—Suburban

For more information:

Lance vonMarbod
509-990-8241

Lancevonmarbod@gmail.com

or

Doug Byrd

509-326-8080

Cell 509-216-6575

Doug@byrdrealestategroup.com



Byrd Real Estate Group L.L.C.
PRODUCING PROPERTY SOLUTIONS

1912 N. Division St., Suite 201
Spokane WA 99207



Retail or Office

6501 & 6507 Highway 2

Priest River, ID



Byrd Real Estate Group L.L.C.

PRODUCING PROPERTY SOLUTIONS
1912 N. Division St., Suite 201
Spokane WA 99207

For more information:

Lance vonMarbod

509-990-8241

Lancevonmarbod@gmail.com

or

Doug Byrd

509-326-8080

Cell 509-216-6575

Doug@byrdrealestategroup.com



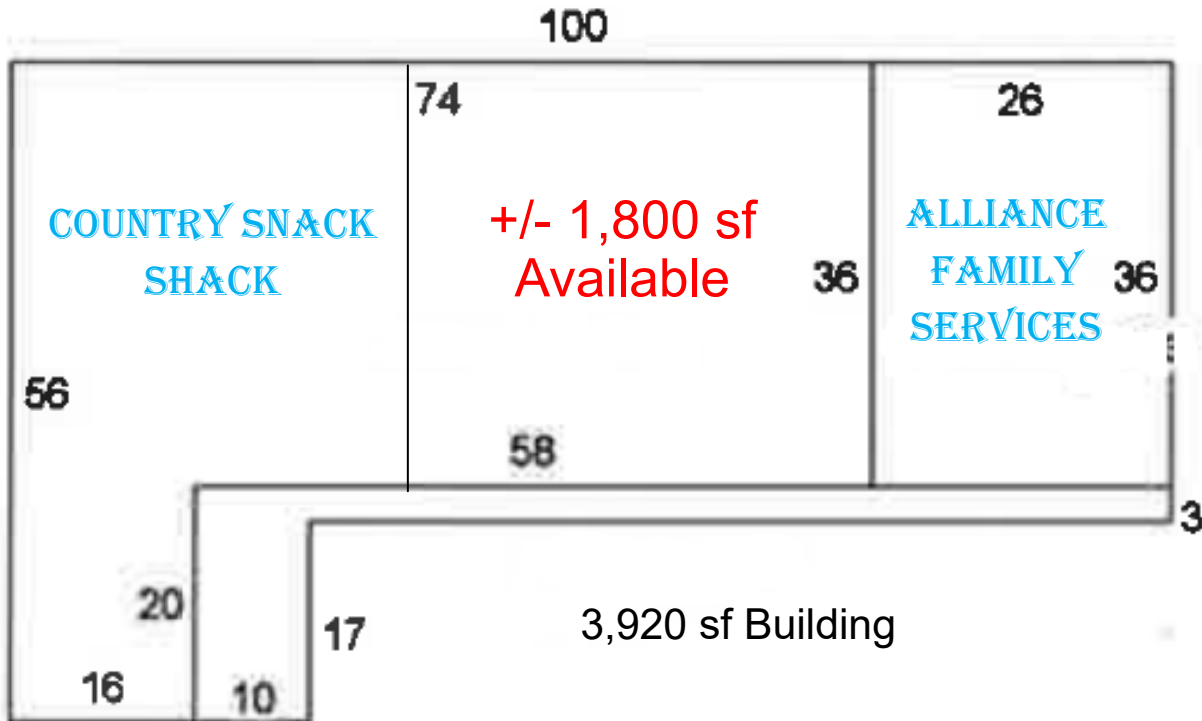
Retail or Office

6501 & 6507 Highway 2

Priest River, ID

Front Building

6501 Floor Plan



For more information:

Lance vonMarbod

509-990-8241

Lancevonmarbod@gmail.com

or

Doug Byrd

509-326-8080

Cell 509-216-6575

Doug@byrdrealestategroup.com



Byrd Real Estate Group L.L.C.

PRODUCING PROPERTY SOLUTIONS

1912 N. Division St., Suite 201

Spokane WA 99207



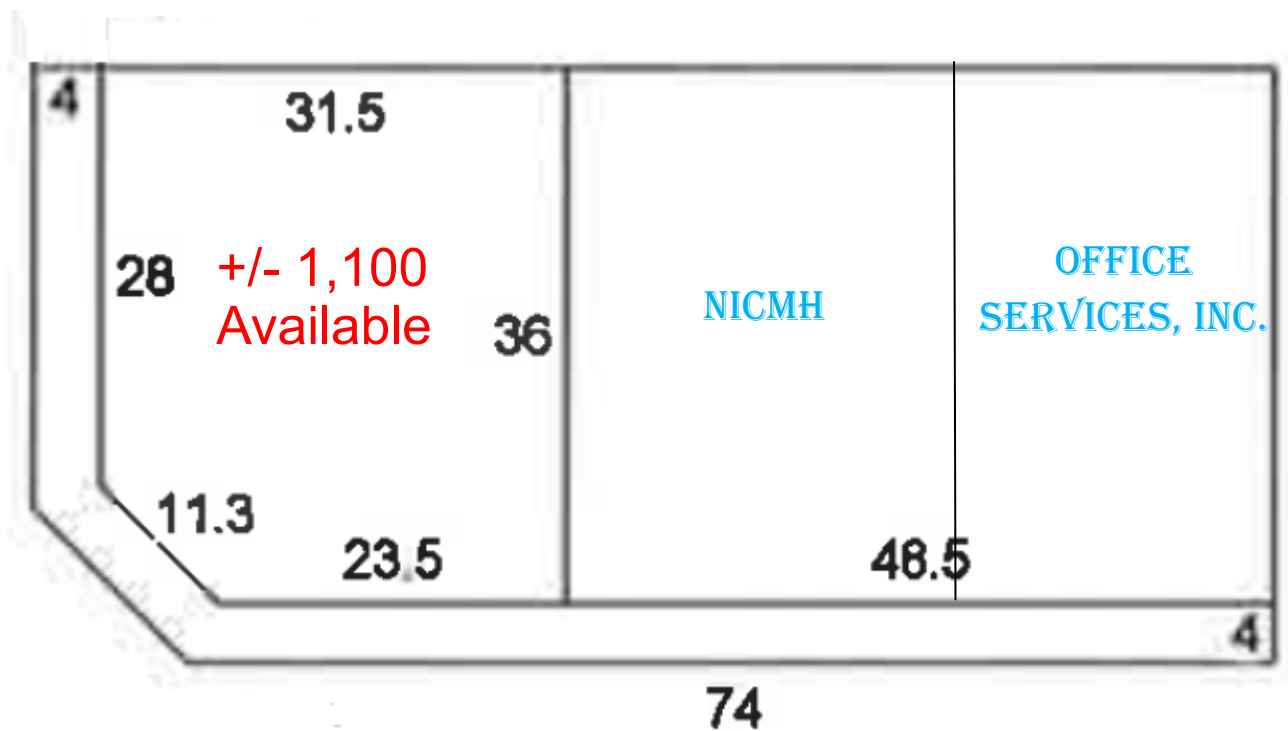
Retail or Office

6501 & 6507 Highway 2

Priest River, ID

Back Building

6507 Floor Plan



2,848 sf Building

For more information:

Lance vonMarbod

509-990-8241

Lancevonmarbod@gmail.com

or

Doug Byrd

509-326-8080

Cell 509-216-6575

Doug@byrdrealestategroup.com



Byrd Real Estate Group L.L.C.

PRODUCING PROPERTY SOLUTIONS

1912 N. Division St., Suite 201

Spokane WA 99207

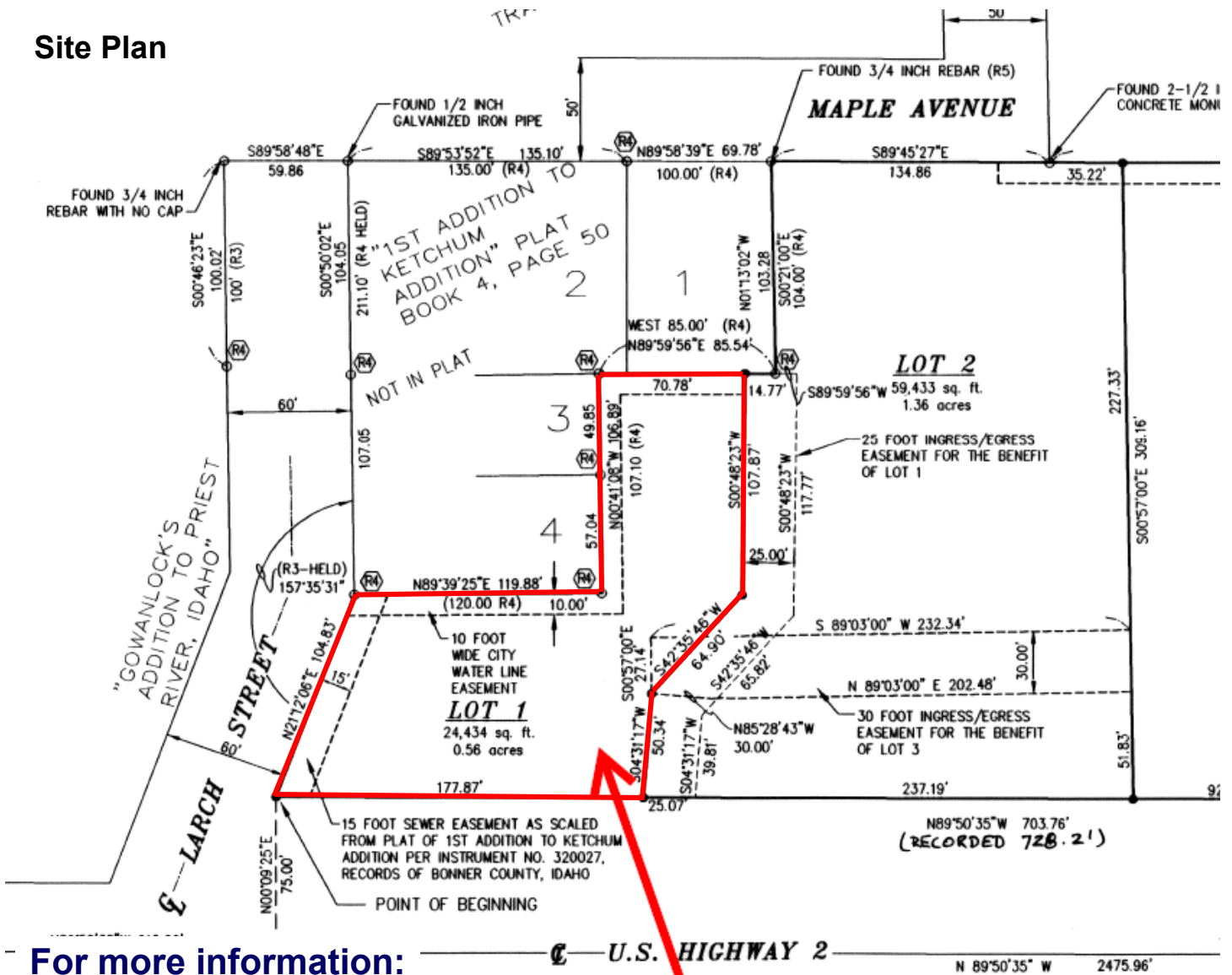


Retail or Office

6501 & 6507 Highway 2

Priest River, ID

Site Plan



For more information:

Lance vonMarbod

509-990-8241

Lancevonmarbod@gmail.com

or

Doug Byrd

509-326-8080

Cell 509-216-6575

Doug@byrdrealestategroup.com



Byrd Real Estate Group L.L.C.

PRODUCING PROPERTY SOLUTIONS

1912 N. Division St., Suite 201

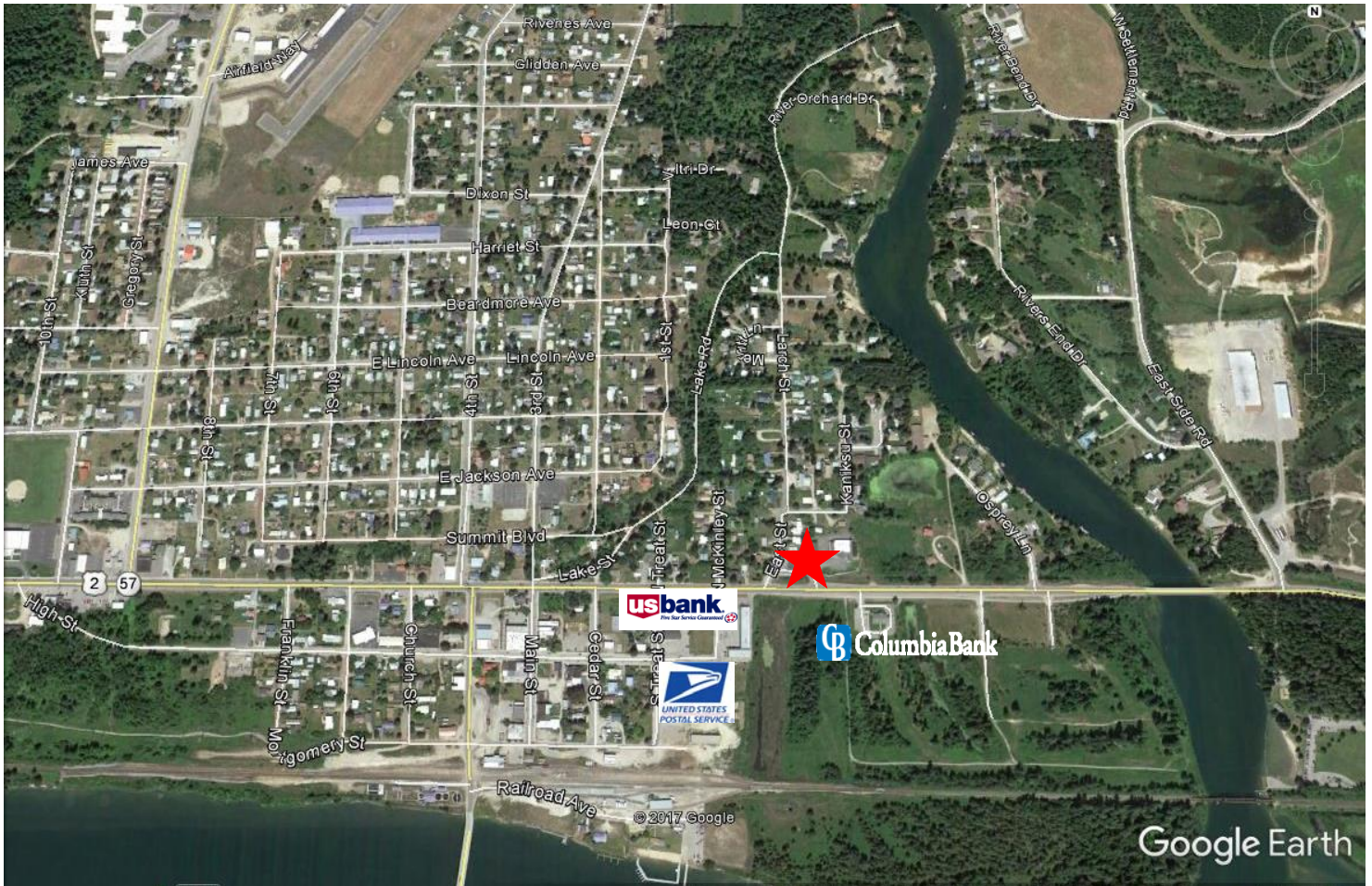
Spokane WA 99207



Retail or Office

6501 & 6507 Highway 2

Priest River, ID



For more information:

Lance vonMarbod

509-990-8241

Lancevonmarbod@gmail.com

or

Doug Byrd

509-326-8080

Cell 509-216-6575

Doug@byrdrealestategroup.com



Byrd Real Estate Group L.L.C.

PRODUCING PROPERTY SOLUTIONS

1912 N. Division St., Suite 201
Spokane WA 99207

Retail or Office

6501 & 6507 Highway 2

Priest River, ID



For more information:

Lance vonMarbod

509-990-8241

Lancevonmarbod@gmail.com

or

Doug Byrd

509-326-8080

Cell 509-216-6575

Doug@byrdrealestategroup.com



Byrd Real Estate Group L.L.C.

PRODUCING PROPERTY SOLUTIONS

1912 N. Division St., Suite 201
Spokane WA 99207

