

COMMERCIAL LAND

815 S Craig Rd., Airway Heights, WA



For Sale

Site Information:

Size: 4.5 Acres (196,020sf)
Parcel: a portion of 15233.0071
(Buyer to subdivide)
Zoned: C-2, General Commercial

Improvements:

8" water line:
Northeast and South ends of property
8" sewer line:
Northeast and South ends of property
Electricity: in Craig Rd

For Sale:
\$382,239
(\$1.95/SF)

For more information: Doug Byrd

Byrd Real Estate Group, LLC
509-326-8080 * Cell 509-216-6575
Doug@byrdrealestategroup.com
Cell 509-216-6575
Doug@byrdrealestategroup.com

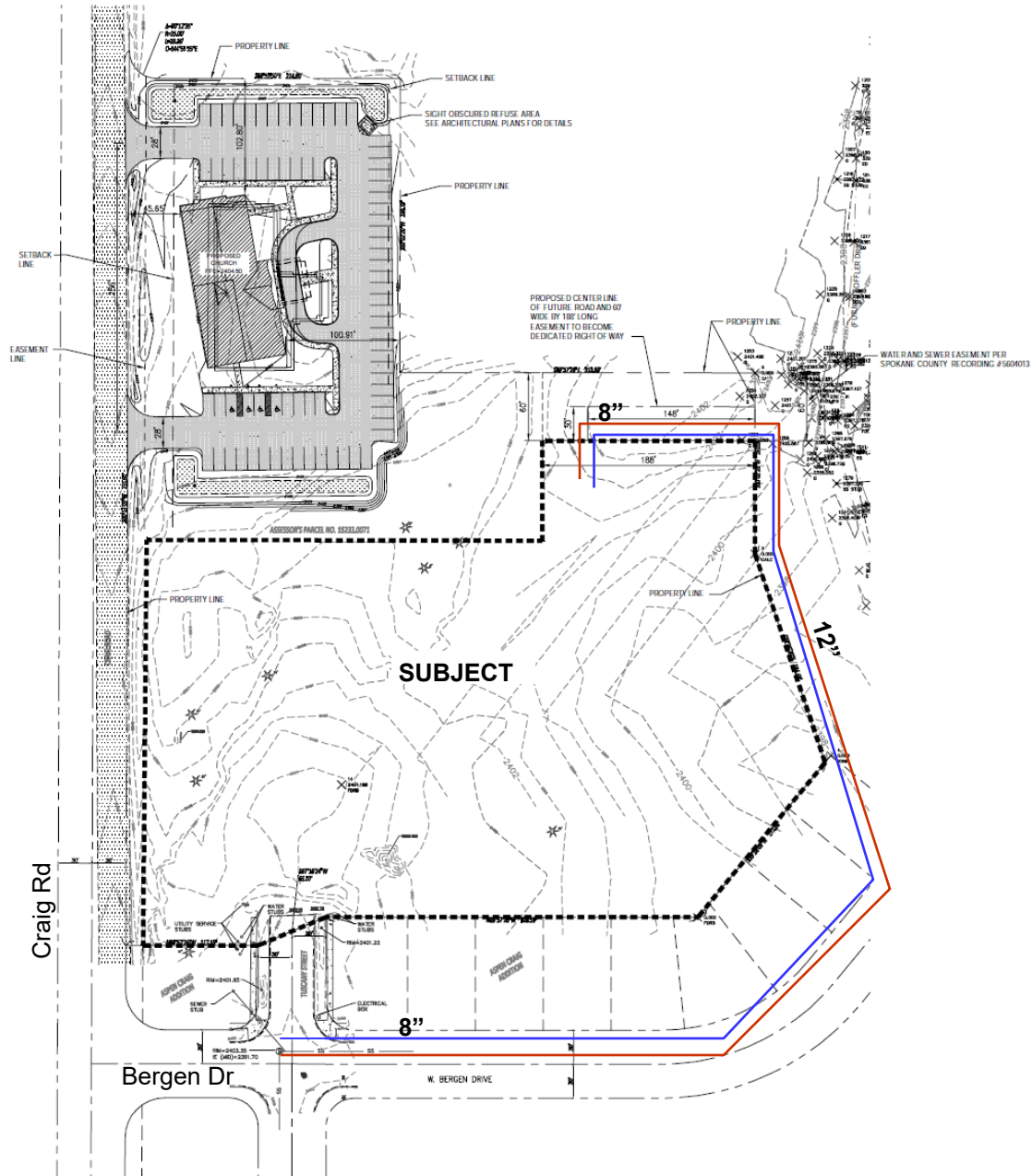


Byrd Real Estate Group L.L.C.
PRODUCING PROPERTY SOLUTIONS

1912 N. Division St., Suite 201
Spokane WA 99207

COMMERCIAL LAND

815 S Craig Rd., Airway Heights, WA



For more information:

Doug Byrd

Byrd Real Estate Group, LLC

509-326-8080

Cell 509-216-6575

Doug@byrdrealestategroup.com



Byrd Real Estate Group L.L.C.

PRODUCING PROPERTY SOLUTIONS

1912 N. Division St., Suite 201

Spokane WA 99207