

LAND

Euclid and Hayford, Spokane WA



For Sale

Located in the County of Spokane and surrounded by new developments in the City of Airway Heights

Airway Heights 2016 Demographics

- Population: 6,523 (1.15% growth)
- Med. HH Income: \$42,014 (15.6% growth)
- Number of Employees: 1,498 (8.24% growth)

Minerals found: Gravel, Sand and Basalt

BNSF Rail Access

Site Size: 206+/- Acres

Zoned: RT (Rural Traditional)

Parcel: 15125.9022, 15124.9006 and a portion of 25065.9054

FOR Sale:
\$1.00/SF

For more information:
Doug Byrd

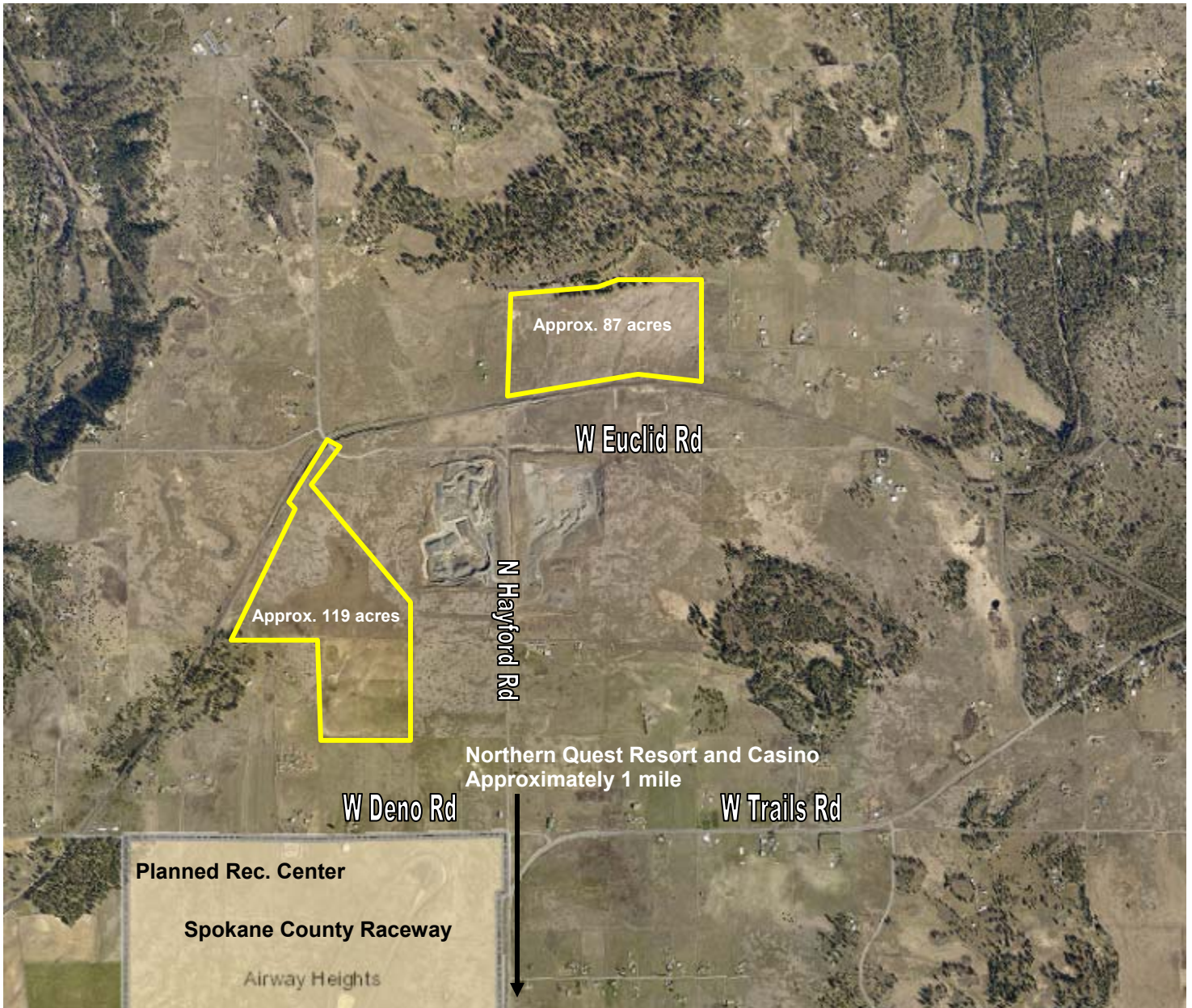
Byrd Real Estate Group, LLC
509-326-8080 Cell 509-216-6575
Doug@byrdrealestategroup.com



Byrd Real Estate Group L.L.C.
PRODUCING PROPERTY SOLUTIONS
1912 N. Division St., Suite 201
Spokane WA 99207

LAND

Euclid and Hayford, Spokane WA



For more information:

Doug Byrd

Byrd Real Estate Group, LLC
509-326-8080 Cell 509-216-6575
Doug@byrdrealestategroup.com



Byrd Real Estate Group L.L.C.
PRODUCING PROPERTY SOLUTIONS
1912 N. Division St., Suite 201
Spokane WA 99207

All information is furnished by the Owner &/or Broker and believed to be complete and correct. The Owner &/or Broker, however, cannot be responsible for changes, errors, omissions or withdrawals of this offering. The above information is from sources deemed reliable but should be verified by parties that could be adversely affected by any statements or information. This is not an offering of sub-agency, with commission splits to be determined.