

OFFICE SPACE ON THE PERIPHERY

1118 N Washington, Spokane, WA



Available for Lease

Close to Downtown Spokane on the periphery of Central Business District. Across from the Spokane Arena and Rock Point Tower.

- Divisible to accommodate up to 3 Tenants
- 3 lighted cabinet signs, facing four directions
- ADA accessible
- High traffic counts: 19,725 ADT on Washington
- Secure parking garage with 14 parking stalls
- Ample off street parking available across the street
- On public transportation route
- Additional information provided in the building features sheet



Byrd Real Estate Group L.L.C.
PRODUCING PROPERTY SOLUTIONS
1912 N. Division St., Suite 201
Spokane WA 99207

Site Information:

Total Building:	14,600+/- sq. ft.
Main level office:	7,300+/- sq. ft.
Parking Garage:	7,300+/- sq. ft.
Site Size:	7,940+/- sq. ft.
Zoned:	Downtown General (DTG)
Parcel:	35181.3701

Sale Price:
\$895,000

For more information:

Doug Byrd

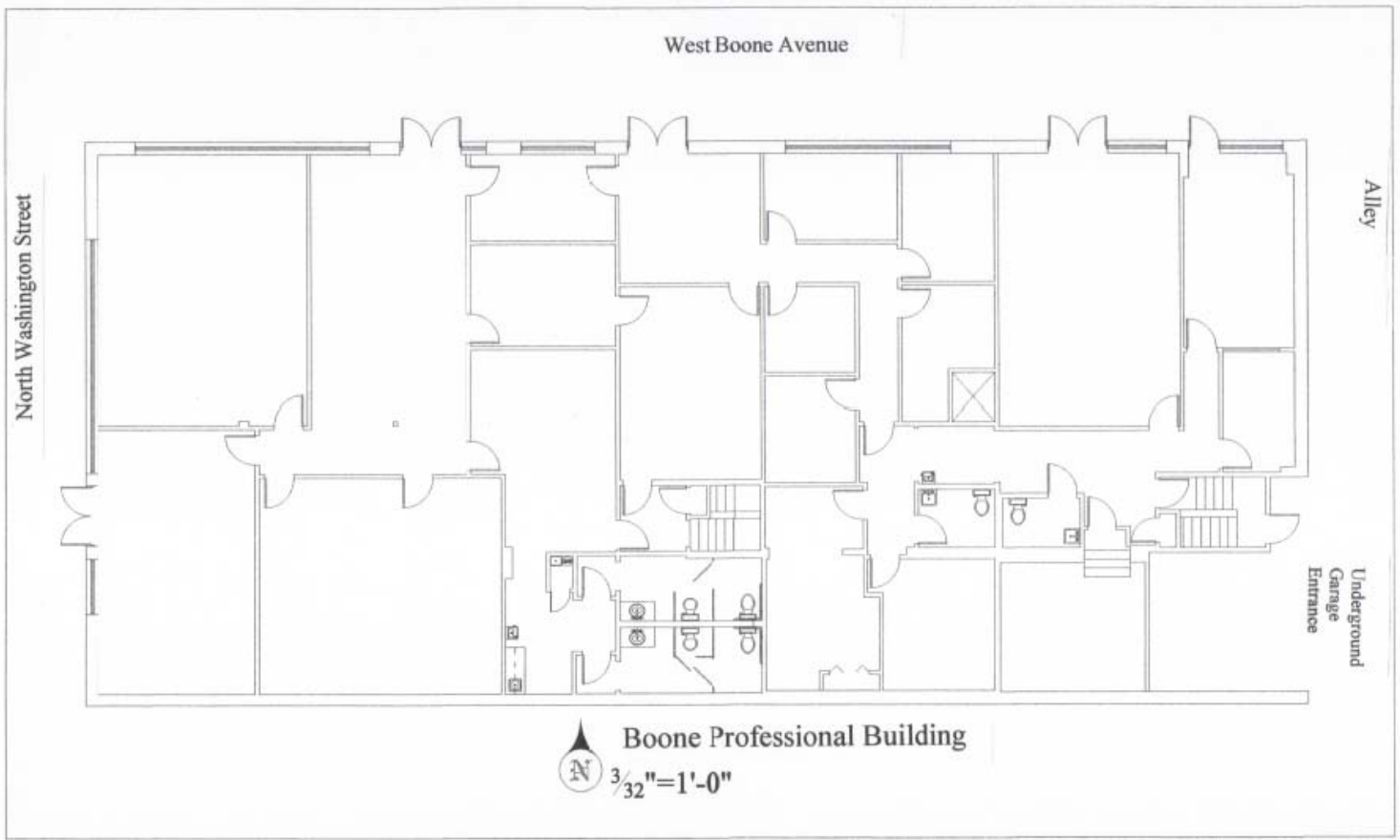
509-326-8080

Cell 509-216-6575

Doug@byrdrealestategroup.com

OFFICE SPACE ON THE PERIPHERY

1118 N Washington, Spokane, WA



For more information:

Doug Byrd

509-326-8080

Cell 509-216-6575

Doug@byrdrealestategroup.com



Byrd Real Estate Group L.L.C.
PRODUCING PROPERTY SOLUTIONS

1912 N. Division St., Suite 201
Spokane WA 99207

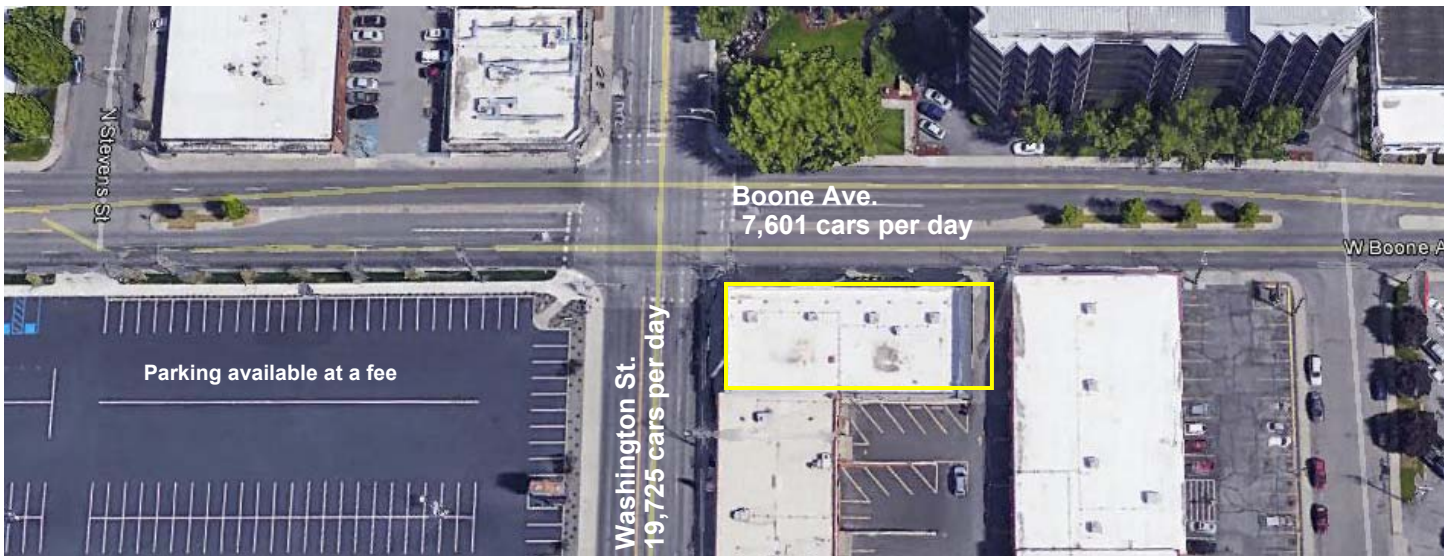
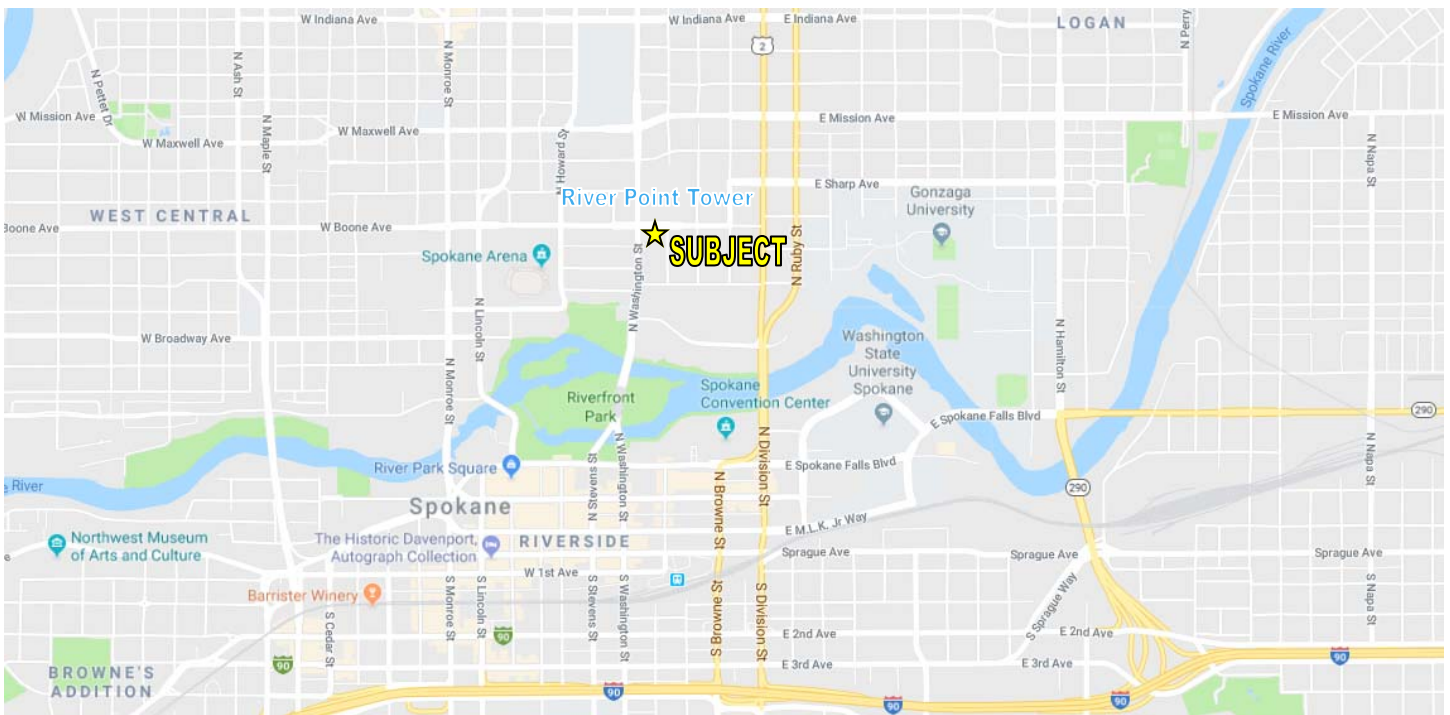


Parking garage

All information is furnished by the Owner &/or Broker and believed to be complete and correct. The Owner &/or Broker, however, cannot be responsible for changes, errors, omissions or withdrawals of this offering. The above information is from sources deemed reliable but should be verified by parties that could be adversely affected by any statements or information. This is not an offering of sub-agency, with commission splits to be determined.

OFFICE SPACE ON THE PERIPHERY

1118 N Washington, Spokane, WA



For more information:

Doug Byrd

509-326-8080

Cell 509-216-6575

Doug@bydrealestategroup.com



Byrd Real Estate Group L.L.C.
PRODUCING PROPERTY SOLUTIONS

1912 N. Division St., Suite 201
Spokane WA 99207

All information is furnished by the Owner &/or Broker and believed to be complete and correct. The Owner &/or Broker, however, cannot be responsible for changes, errors, omissions or withdrawals of this offering. The above information is from sources deemed reliable but should be verified by parties that could be adversely affected by any statements or information. This is not an offering of sub-agency, with commission splits to be determined.