

Division St. Retail



Great Location

Located on Major Arterial (+/-44,000 Cars per day)

- Adjacent to Kalico Kitchen
- Continuous pedestrian & vehicle traffic
- Nice open retail space
- Extra parking/storage area behind building

Lease Rate:
\$4,000 /mo.
+ NNN

Property Specifications:

Subject: 4,280 +/- sf
Site: 16,450 +/- sf
Constructed: 1958
Parcel #: 35071.0802
Zoning: GC-70

For Information:

Greg Byrd
509-326-8080
Cell 509-994-4345
greg@byrdrealestategroup.com
or
Sharon Reynolds
Cell 509-499-4600
Sharon@byrdrealestategroup.com

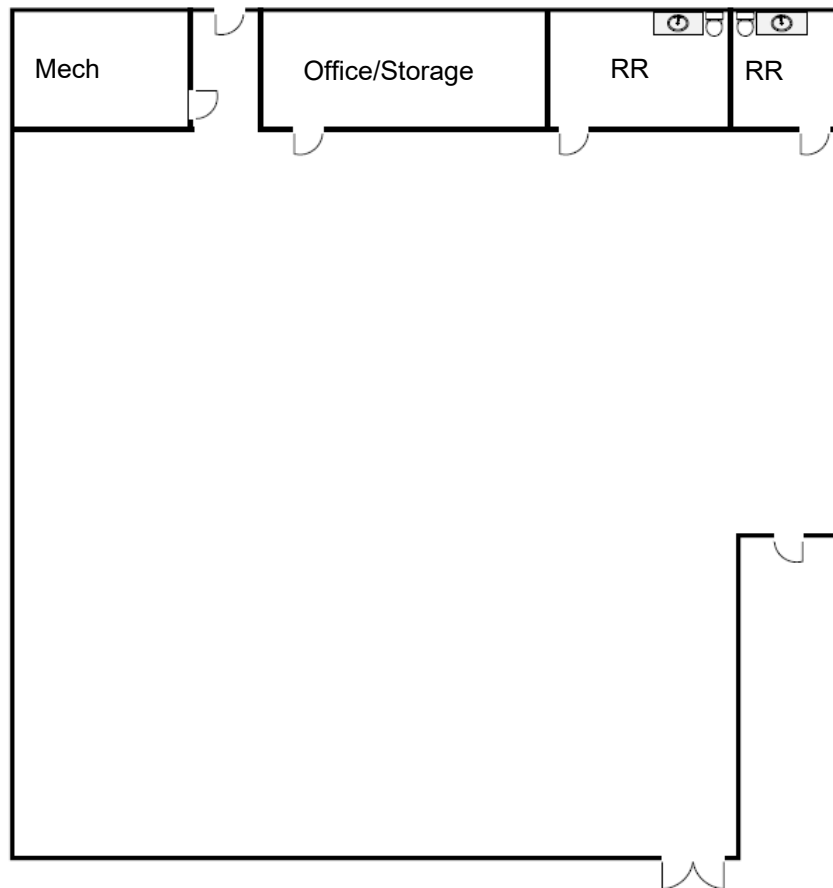


Byrd Real Estate Group L.L.C.
PRODUCING PROPERTY SOLUTIONS
1912 N. Division St., Suite 201
Spokane WA 99207



For Sub-Lease

Division St. Retail



For Information:

Greg Byrd

509-326-8080

Cell 509-994-4345

greg@byrdrealestategroup.com

or

Sharon Reynolds

Cell 509-499-4600

Sharon@byrdrealestategroup.com



Byrd Real Estate Group L.L.C.

PRODUCING PROPERTY SOLUTIONS

1912 N. Division St., Suite 201

Spokane WA 99207



CoStar LoopNet



CBA COMMERCIAL BROKERS
ASSOCIATION

Division St. Retail



For Information:
Greg Byrd
509-326-8080
Cell 509-994-4345
greg@byrdrealestategroup.com
or
Sharon Reynolds
Cell 509-499-4600
Sharon@byrdrealestategroup.com



Byrd Real Estate Group
PRODUCING PROPERTY SOLUTIONS
1912 N. Division St., Suite 201
Spokane WA 99207



All information is furnished by the Owner &/or Broker and believed to be complete and correct. The Owner &/or Broker, however, cannot be responsible for changes, errors, omissions or withdrawals of this offering. The above information is from sources deemed reliable but should be verified by parties that could be adversely affected by any statements or information. This is not an offering of sub-agency, with commission splits to be determined.