

815 S CRAIG RD | AIRWAY HEIGHTS, WA



BYRD REAL ESTATE GROUP



FOR SALE

COMMERCIAL LAND

IMPROVEMENTS:

- 8" water line: Northeast and South ends of property
- 8" sewer line: Northeast and South ends of property
- Electricity: in Craig Rd

SITE INFORMATION:

- Size: 4.5 Acres (196,020sf)
- Parcel: a portion of 15233.0071 (Buyer to subdivide)
- Zoned: C-2, General Commercial

FOR SALE:

\$382,239

(\$1.95/SF)

DOUG BYRD

509-326-8080  
Cell 509-216-6575  
Doug@byrdrealestategroup.com



Byrd Real Estate Group L.L.C

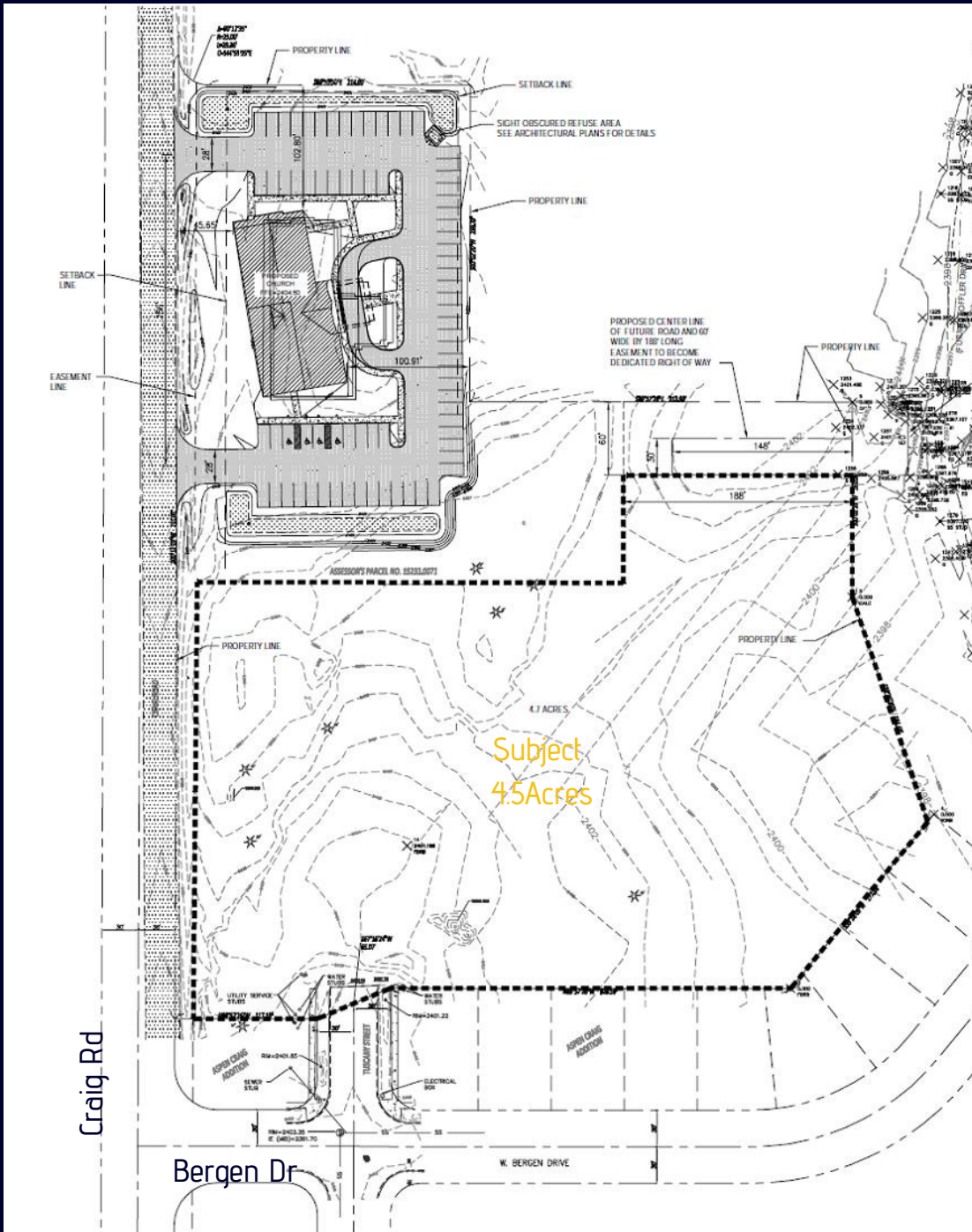
PRODUCING PROPERTY SOLUTIONS  
1912 N. Division St., Suite 201  
Spokane, WA. 99207



All information is furnished by the Owner &/or Broker and believed to be complete and correct. The Owner &/or Broker, however, cannot be responsible for changes, errors, omissions or withdrawals of this offering. The above information is from sources deemed reliable but should be verified by parties that could be adversely affected by any statements or information. This is not an offering of sub-agency, with commission splits to be determined.



BYRD REAL ESTATE  
GROUP



**DOUG BYRD**

509-326-8080

Cell 509-216-6575

Doug@byrdrealestategroup.com



**Byrd Real Estate Group L.L.C**

PRODUCING PROPERTY SOLUTIONS

1912 N. Division St., Suite 201

Spokane, WA. 99207

